

ORA UV

USER MANUAL

UV LED Water Purifier: Connected with Reverse Osmosis Water Filtration Systems





CONTENTS

1. Installation Instruction	01
2. Product Introduction	02
3. Sample Connection	02
4. Installation Tips	03
5. Installation Steps Precautions	04
6. Safety Information and Warnings	06
7. Troubleshooting	07
8. Limited Warranty	08



INSTALLATION INSTRUCTION

Before Installation

INSPECT THE BOX: Open the box and take out the system and all the components. Inspect them carefully according to "Product Introduction" and make sure nothing is missing or damaged during shipping. If any parts are cracked or broken, please do not proceed with the installation and contact us for an exchange or diagnosis.

Technical Parameters

Model	UV-8W	UVT%	Recommend above 90%
Flow Rate	1 gal/m	Operating Temp	Min. 32°F, Max. 132°F
Rated Power	8W	Working Pressure	Max. 8 bar
Rated Voltage	24 VDC	Applicable Water Source	Municipal water
LED Lifetime	7000 hours	Water Connections	1/4" Quick fittings

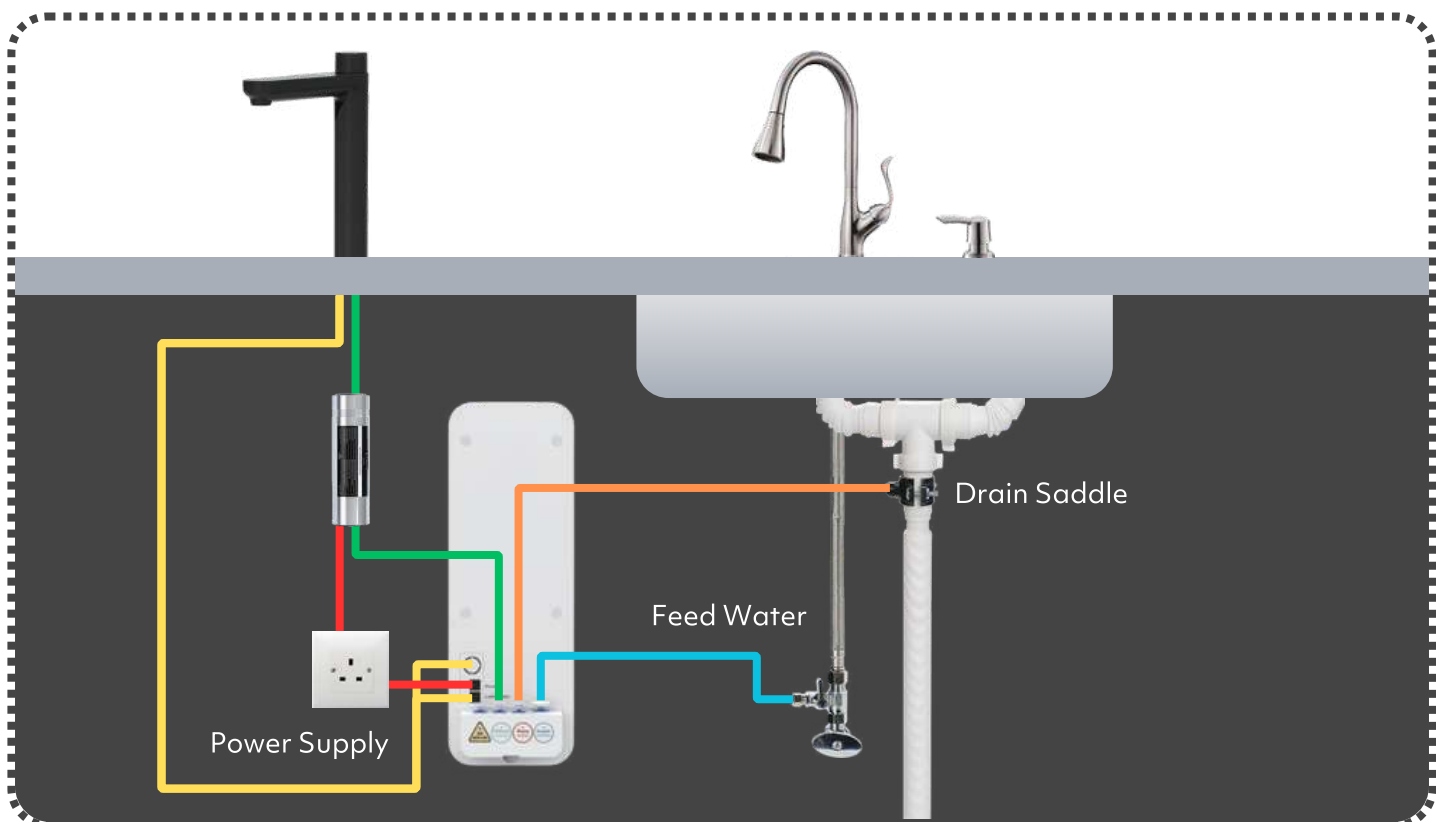


PRODUCT INTRODUCTION



1. LED UV x 1 set
2. Adaptor x 1 set
3. Single clamp x 2 pcs
4. Mounting sticker x 1 pc
5. Screws x 2 pcs
(or Double-sided adhesive tape)

SAMPLE CONNECTION





INSTALLATION TIPS

How to cut the tubing?

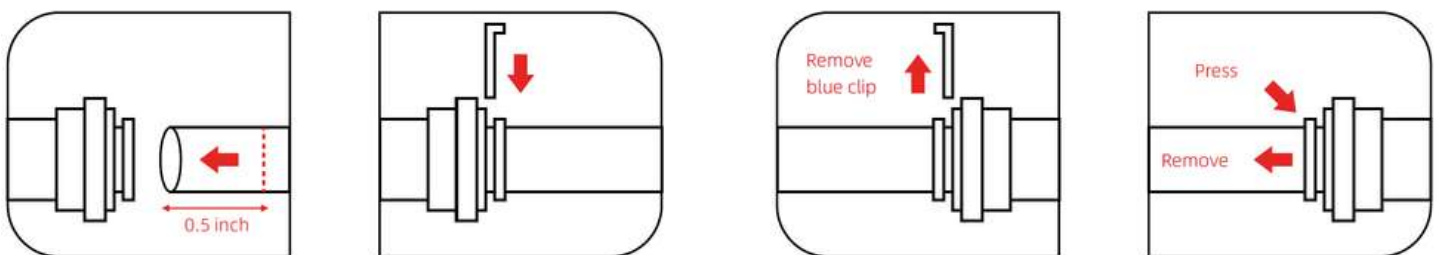
Please cut the tubing into two sections in proper length, make sure cut them squarely and cleanly.

How to connect/disconnect the tubing?

TO CONNECT: Please push the tubing into the fitting and make sure it is fully inserted. Then put the blue lock clip on the fitting, it will lock the tubing in place.

TO DISCONNECT: Please remove the blue lock clip from the fitting, push in the lock sleeve, and then pull out the tube from the fitting.

NOTE: If the tubing is not fully inserted, water leakage may occur. Pulling out the tubing directly will damage the fitting, which may also cause water leakage.





INSTALLATION STEPS PRECAUTIONS

- Do not use with water that is microbiologically unsafe or of unknown quality without adequate disinfection.
- Testing was performed under standard laboratory conditions, actual performance may vary.
- For cold water use only.
- This filter must be protected from freezing, which can cause cracking of the filter and water leakage.
- Do not allow children under 3 years of age to have access to small parts during installation.
- The installation must comply with all applicable state and local regulations.

Step 1: Mounting single clamps onto the wall

- Please stick the mounting sticker onto the wall and drill two holes by driller.
- Please pull the plastic expansion pipes into the holes.
- Please mount the single clamps onto the wall.
- Please mount the UV LED upto the clamps.



NOTE: If you don't want to drill holes on the wall or carbinet, you could use double-side adhesive tape.



Step 2: Connect 1/4" tubing from filtered port of RO system to UV LED INLET port



NOTE: Please make sure the tubings are fully inserted, otherwise may result in water leakage.

Step 3: Connect 1/4" tubing from RO faucet to UV LED outlet port



NOTE: Please note that the quick fitting is not a must for the installation, you don't have to use the fitting if it's not necessary.



Step 4: Connect adaptor with UV LED



SAFETY INFORMATION AND WARNINGS

- Do not allow water to freeze in the device.
- Do not use the device if damaged or dropped.
- Do not submerge the device under water.
- This product is not ignition protected. Do not install in the engine compartment or other areas where explosive vapours may be present.

Input Water Quality

UV water purifier is extremely effective against microorganisms but only if the UV light can pass. This means that the quality of your water is very important in order to ensure healthy water exceeds the listed parameters. We highly recommend that appropriate pretreatment equipment be installed. (equipment required will depend on parameters being treated)



Water Quality Requirements

UV transmittance	> 93%	Temp	Min. 32°F, Max. 132°F
Hardness	< 120 mg/L	Turbidity	< 1 NTU
Manganee	< 0.05 mg/L	Tannins	< 0.1 mg/L
Iron	< 0.03 mg/L		

TROUBLESHOOTING

Fault	Possible Cause	Solution
Grayish / bubbly water	At low flow rates (1lpm), dissolved air may be released into bubbles to give a greyish color to the water.	This is absolutely no issue with the water quality. The bubbles will burst quickly and water becomes clear after about 1-2minutes.
Green light not turning on after turning on the faucet	<ol style="list-style-type: none"> 1. No DC input. 2. Inlet and outlet are connected backwards. 3. Internal driver or UV LED bead malfunction. 	<ol style="list-style-type: none"> 1. Check the DC power supply and if the cables in correct connection. 2. Check if the inlet and outlet are in the correct connection. 3. Contact the seller for replacing the new UVLED water purifier.
Green light on after connecting to the power supply	<ol style="list-style-type: none"> 1. Water is passing the UV LED water purifier. 2. The internal magnet is stuck so the water flow switch is always on. 	<ol style="list-style-type: none"> 1. Turn off the faucet then green light will be off. 2. Make sure water filter is installed before UV to remove the sand and dirt.



Fault	Possible Cause	Solution
Drips from the device	Condensation, leakage.	In case of extreme dripping, close the shut-off valve in the line.
Very low flow rate of water	The pressure in the system is not high enough. A possible clog in the water line. The pressure in the system is not high enough.	Check if the pressure in the system meets the requirements indicated in this manual. Check if the water inlet and outlet are properly connected to the line. Disconnect the faucet and check for and clear the clog.

LIMITED WARRANTY

One Year Warranty

Octopus First General Trading LLC (referred herein as “Kloudfilter”) provides a one-year limited warranty from the purchase date as per the sales invoice or receipt issued by Kloudfilter. Kloudfilter reserves the right to either replace defective products and/or parts with new ones or repair defective products or parts at its sole discretion. Repair or replacement of defective products is determined after inspection of the product. However, Kloudfilter will always attempt to repair defective products before replacing them with new ones. All products and parts that are replaced become the property of Kloudfilter. Repair or replacement of defective products under this warranty does not extend or renew the warranty period; the original purchase date will still be considered for future warranty claims. Kloudfilter reserves the right to charge a service fee for any warranty repair/service, and this warranty applies only to defects in material, design, and workmanship.



This warranty does not cover:

1. Periodic checks, maintenance, no-fault-found cases, and repair or replacement of parts due to normal wear and tear.
2. Abuse or misuse, including but not limited to failure to use the product for its intended purposes or in accordance with Kloudfilter product instructions on usage and maintenance.
3. Defects resulting from the use of the product with accessories not approved by Kloudfilter.
4. Failure of the product arising from incorrect use not consistent with the instructions and technical safety standards prescribed in the product user manual.
5. Accidents, Acts of God, lightning, water, fire, public disturbances, improper ventilation, voltage fluctuations, or any cause beyond the control of Kloudfilter (“Force Majeure”).
6. Unauthorized modifications carried out to the product to comply with local or international technical standards in countries for which this Kloudfilter product was not originally designed.
7. Cases where the serial number on the product has been altered, deleted, removed, or made illegible.
8. Consumables (components expected to require periodic replacement during the lifetime of the product, such as non-rechargeable batteries, replacement filters, etc.).
9. Neglect.

Limitations and Exclusions:

If any exclusion is not permitted by applicable law, Kloudfilter limits its warranty only to the maximum extent permitted by law. Any warranty that cannot be fully excluded will be limited to the duration of this warranty.

Kloudfilter obligation under this warranty is limited to repair or replacement of products subject to these warranty terms and conditions. Kloudfilter shall not be liable for any loss or damage relating to products or services covered by this warranty, including economic or intangible losses—the price paid for the product—loss of profits, revenue, data, enjoyment, or use of the product, and indirect, incidental, or consequential loss or damage.

This warranty is not transferable. It represents the purchaser’s sole and exclusive remedy, and Kloudfilter shall not be liable for any incidental or consequential damages for breach of any express or implied warranty of this product.

K L O U D

Ora UV



KLOUD™ | DESIGNED IN UAE

www.kloudfilter.com

Water, The Way It *Should* Be _____ 